
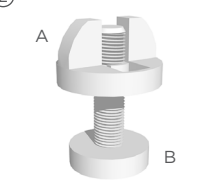
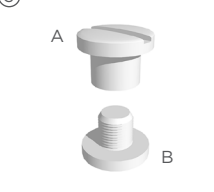



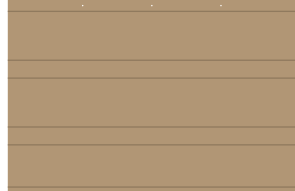
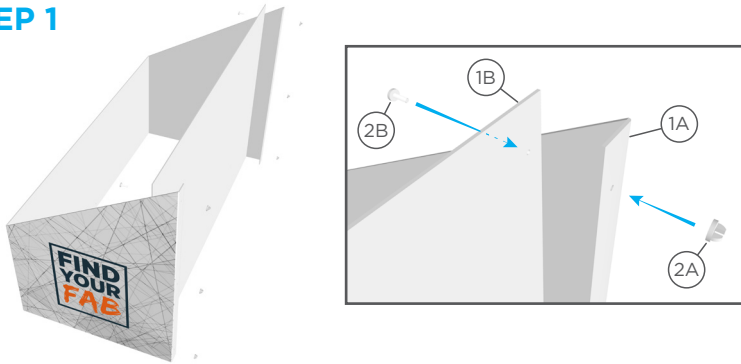


PARTS LIST

<p>①</p>  <p>A (Front/Sides)</p> <p>B (Back)</p> <p>Graphic</p>	<p>②</p>  <p>Viking Fastener 6 pc</p>	<p>③</p>  <p>Rivet Fastener 4 pc</p>
<p>④</p>  <p>Riser Step 3 pc</p>	<p>⑤</p>  <p>Riser Front 1 pc</p> <p>⑥</p>  <p>Riser Back 1 pc</p>	<p>⑦</p>  <p>Steps Sheet (Steps Insert) 1 pc</p>

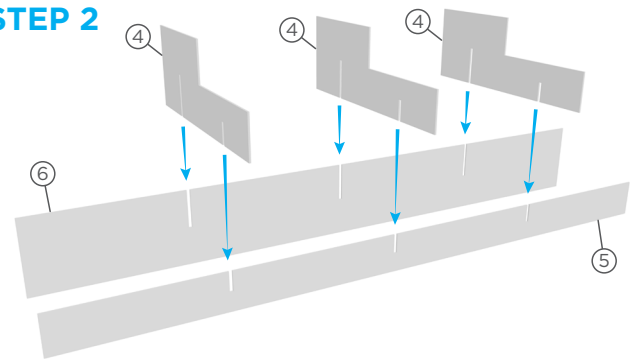
ASSEMBLY INSTRUCTIONS

STEP 1



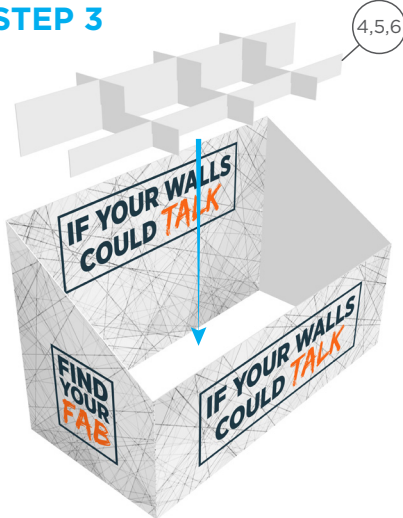
Fold the Front/Sides Graphic^{1A} along the score lines. Then, attach the Back Graphic^{1B} using the 6 Viking Fasteners² through the holes on the left and right sides.

STEP 2



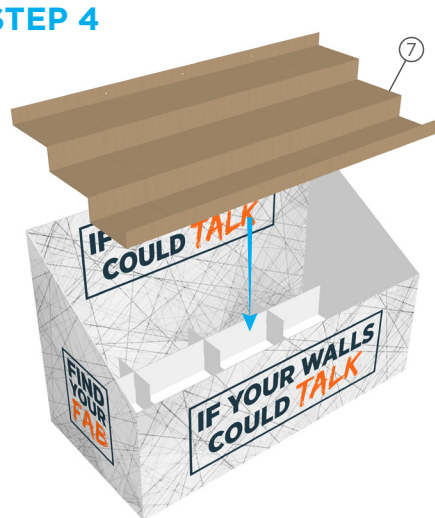
Assemble the Riser Base by inserting the Riser Steps⁴ into the slits of the Riser Front⁵ and Riser Back⁶ as shown.

STEP 3



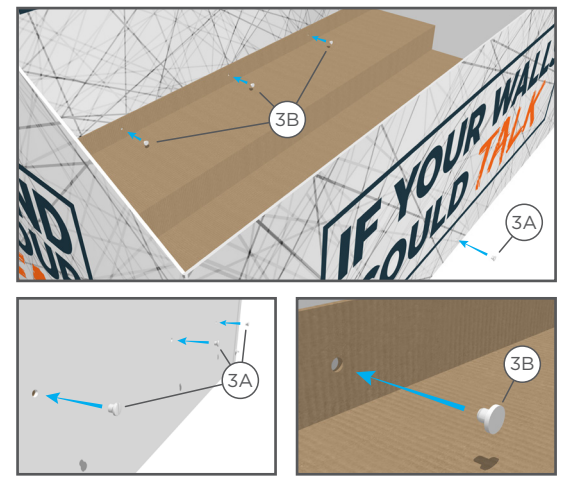
Place the assembled Riser Base in the inside of the Graphic¹ with the tall side of the Riser Base flush against the Back Graphic^{1B}.

STEP 4



Fold the Steps Insert⁷ along the score lines to shape into steps. Place the Steps Insert⁷ onto the Riser Base inside the Graphic¹.

STEP 5



Attach the Steps Insert⁷ to the Graphic using the Rivet Fasteners³, the 3A pieces on the outside of the Graphic¹ and the 3B pieces on the inside.