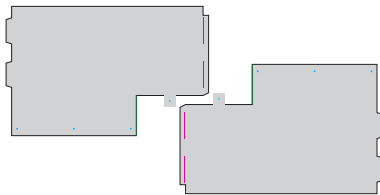


SMALL RUG BOX

45"W x24"D x32.25"H

INCLUDED



(x2) Side Graphics



(x1) Wood frame

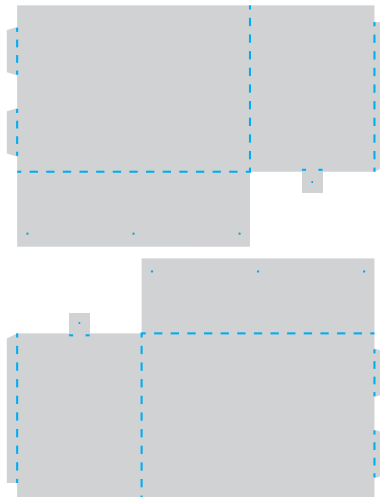


(10) screws



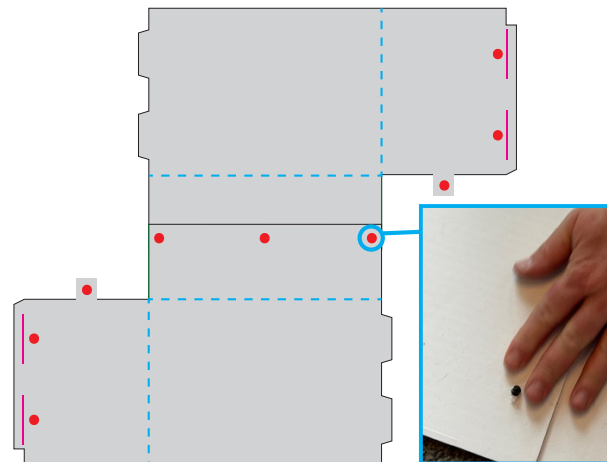
(7) fastener plugs

NOTE: Installation will require two people



STEP 1

Start by folding your graphics along all of the scored lines



STEP 2

With your pieces laying face down, align the drill holes of each base flap. Secure together with fastener plugs by inserting them from underneath and supplying pressure from the top side.



STEP 3

Fold up the walls of the box, taking care to make sure the small bottom flap on the short-side folds inward and over the base.



STEP 4

Secure that small flap on the bottom to the nearest fastener plug. Insert the side-tabs into the side-slots and secure with fastener plugs.



STEP 5

With a helper, stabilize the wood frame aligned to the top edge of the box. Using a drill or screwdriver, fasten the graphics to the frame using 3 screws on each long side, and 2 screws on each short side.