

## LARGE RUG BOX

### 40"W x24"D x48"H

#### INCLUDED



(x2) Side Graphics



(x1) Base



(x1) Wood frame



(10) screws



(16) fastener plugs



#### Installation will require two people



#### STEP 1

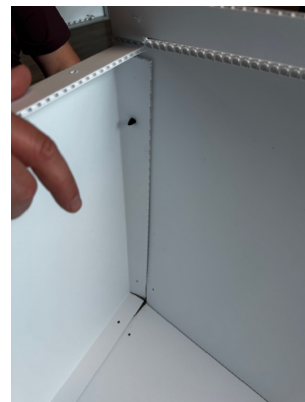
Start by folding your graphic box-sides and base along the scored lines.



#### STEP 2

Start with the base and one side of the graphic. Line up the drill holes at the bottom of the graphic with the drill holes on the base flaps. Secure together with fastener plugs.

**TIP:** best application is if you can apply pressure to both sides of the box to secure a snug connection.



#### STEP 3

Align the second side graphic to wrap around the box base. The tabs and slots of each side should connect.



#### STEP 4

Secure the remaining bottom drill holes with fastener plugs.



#### STEP 5

Secure the tab and slot seams with fastener plugs in the aligning drill holes.



#### STEP 6

With a helper, stabilize the wood frame aligned to the top edge of the box. Using a drill or screwdriver, fasten the graphics to the frame using 3 screws on each long side, and 2 screws on each short side.