

POP PILLAR & BROCHURE HOLDER ASSEMBLY INSTRUCTIONS

Step 1: Place each section of pop pillar face down and fold inward along the creases

Step 2: Peel tape and hold area up.

Step 3: Line up both edges before pressing tape down.

Step 4: Repeat steps 1 through 3 for sections 2 to 4.

Step 5: Begin with the bottom and middle section. See numbers displayed on each section for reference. Remove any cardboard remnants that may have remained.

Step 6: Match up notches and gently press upper piece down onto the lower piece.

Step 7: Take the third and fourth sections and match up the notches. Gently press upper piece down onto the lower piece.

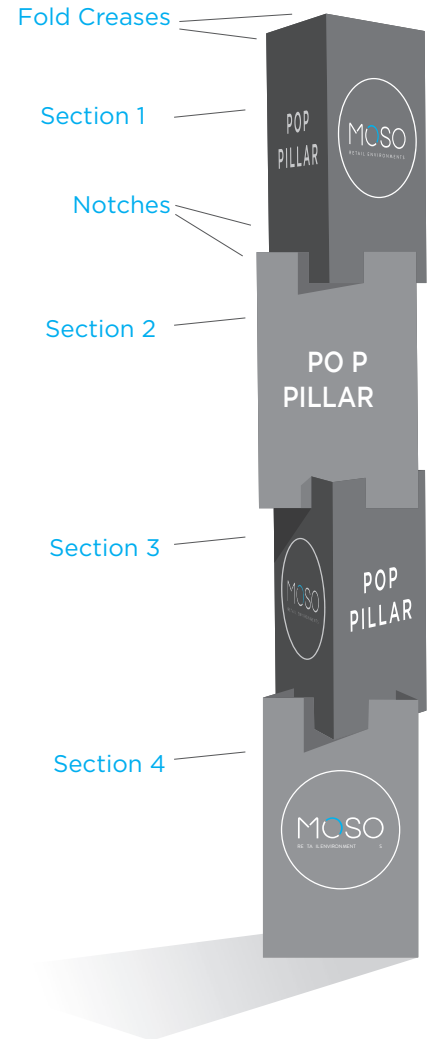
Step 8: Double check the base tier to make sure it is secure and level.

Step 9: Align notches and slide top section onto the lower section. Your Pop Pillar should now be assembled.

Step 10: If your POP Pillar came with a brochure holder, fold along the score lines on the holder piece, and fold the bottom piece all the way up.

Step 11: Feed side pieces into the pre-cut notches, then slide down to lock the brochure holder in place.

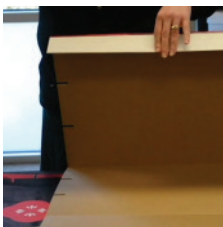
Step 12: Reach into the holder and push the bottom of the brochure holder into place, making sure it clicks and is secure before putting in brochures.



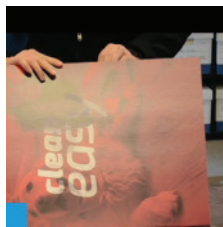
VISUAL EXAMPLES

POP PILLAR

STEP 2



STEP 3



STEP 5

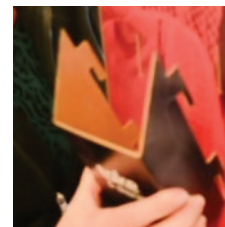


BROCHURE HOLDER

STEP 10



STEP 11



STEP 12

