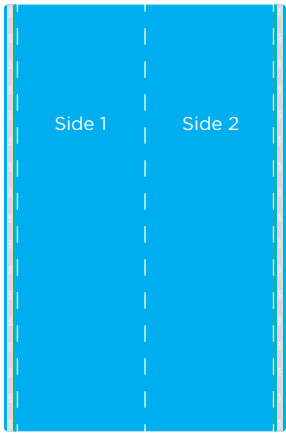


**PIECES**



**Panel 01**

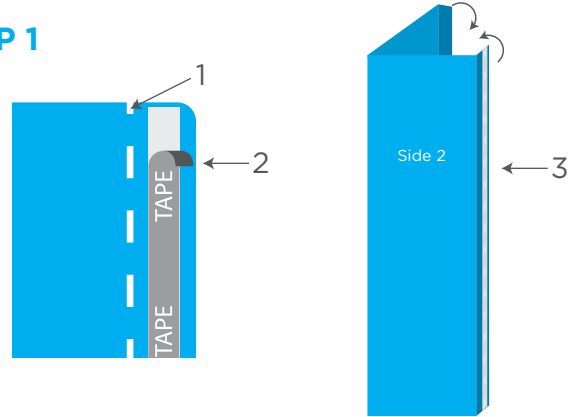
(Consists of Side 1 & Side 2)



**Panel 02**

**ASSEMBLY INSTRUCTIONS**

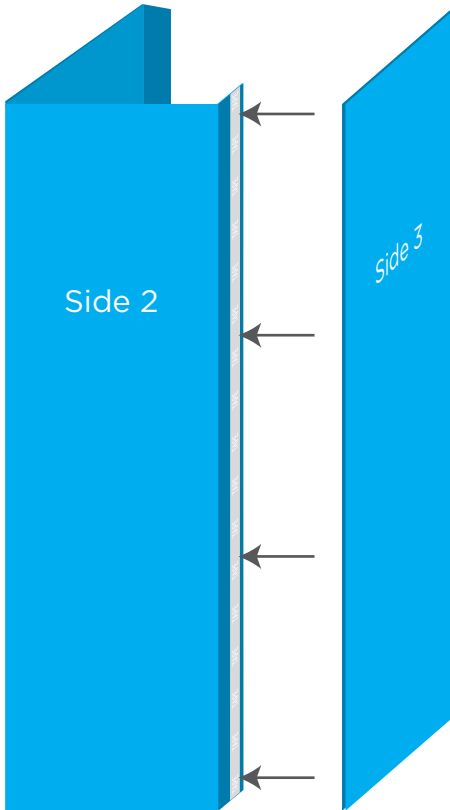
**STEP 1**



Fold Panel 01 along all three creases<sup>1</sup>. Next, pull the paper backing off both strips of tape<sup>2</sup>. Then, prop up Panel 01 by folding all of the sides and flaps inwards.<sup>3</sup>

**ASSEMBLY INSTRUCTIONS**

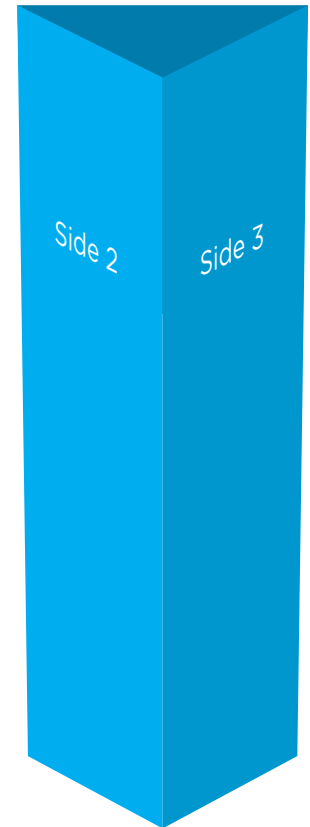
**STEP 2**



**STEP 3**



**STEP 4**



While Panel 01 is propped up, attach Panel 02 to one of the flaps by adhering it to the tape. Carefully align the edges by using the floor to make sure the panels are level and straight.

Attach the other side of Panel 2 to the other flap of Panel 1 by adhering it to the tape. If you need to realign the panels you can separate them and retry steps 2 and 3.

Finally, after all of the panels are connected, press along the edges so they become firmly adhered.