

Optium Frame 120" long / 1" profile / unlit

Read Every Page Of The
Instructions Before Assembling

INCLUDED

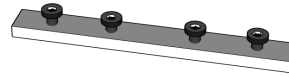
(A) 48" Extrusions (x2)



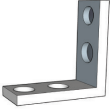
(B) 60" Extrusions
w/ Butt-Joint Splice (x4)



(C) Splice Connector (x2)



(D)



L Brackets (x4)

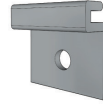
(E)



Middle Support Bar (x1)



Screws (x24)



**Wall Mount
Brackets (x8)**



Allen Wrench

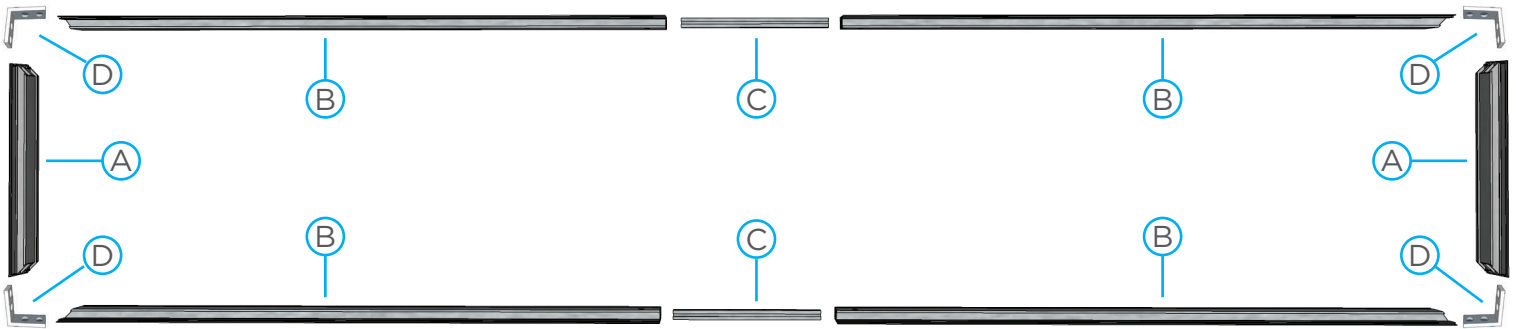
YOU WILL NEED

- Screws
- Level
- Drill

ASSEMBLE THE FRAME

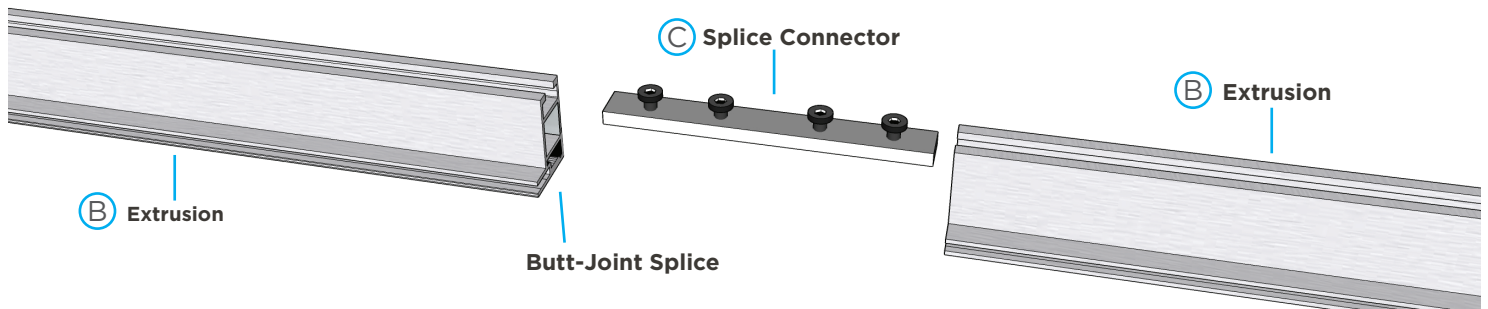
STEP 1

Form a rectangle by laying out the Extrusions, Splice Connectors and L Brackets as illustrated.

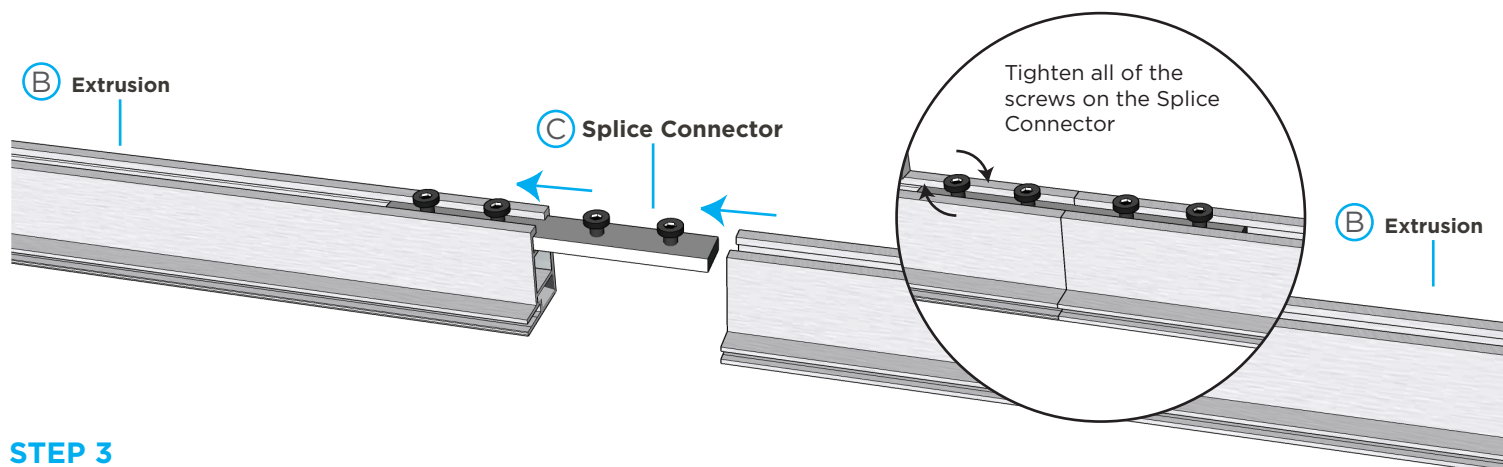


STEP 2

Large, oversized frames have the extrusions cut in half for shipping purposes. Under this circumstance you will have to use a Splice Connector to join the 60" Extrusions w/Butt-Joint Splices before you assemble the frame. This will create the top and bottom of the frame.



Optium Frame 120" long / 1" profile / unlit



STEP 3

Insert the Splice Connector into the middle, top channel of the spliced Extrusions. The Extrusions should meet and be flush to each other. Tighten the screws on the Splice Connector to fasten the spliced Extrusions together. Repeat for the remaining spliced Extrusions.

STEP 4

Now that the top and bottom extrusions have been connected together let's begin assembling the frame.

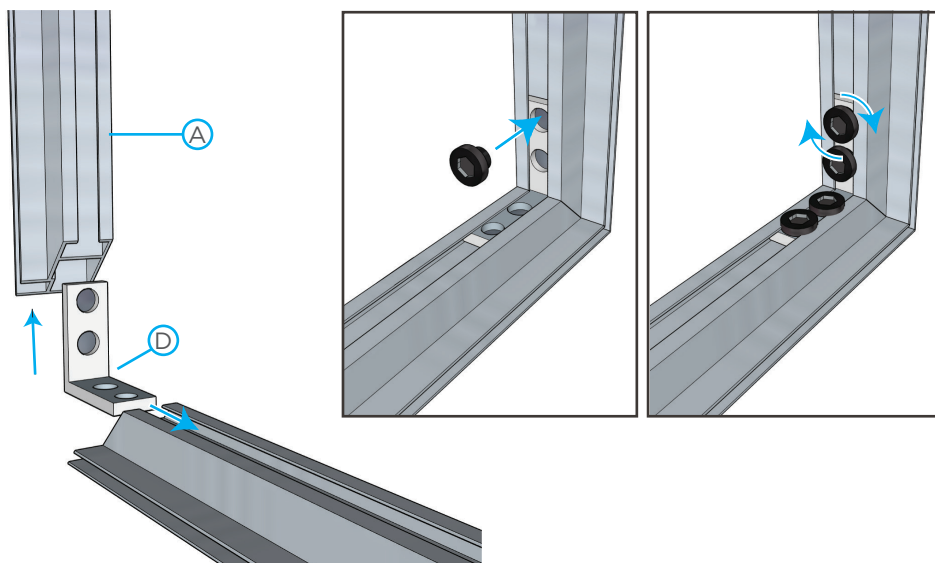


STEP 5

Connect all four corners by inserting the L Brackets into the bracket channel of the Extrusions. Join the corners together by inserting and tightening (4) Screws into each L Bracket.

Make sure your extrusions form a 90° angle before tightening the L bracket screws. Repeat for all four corners.

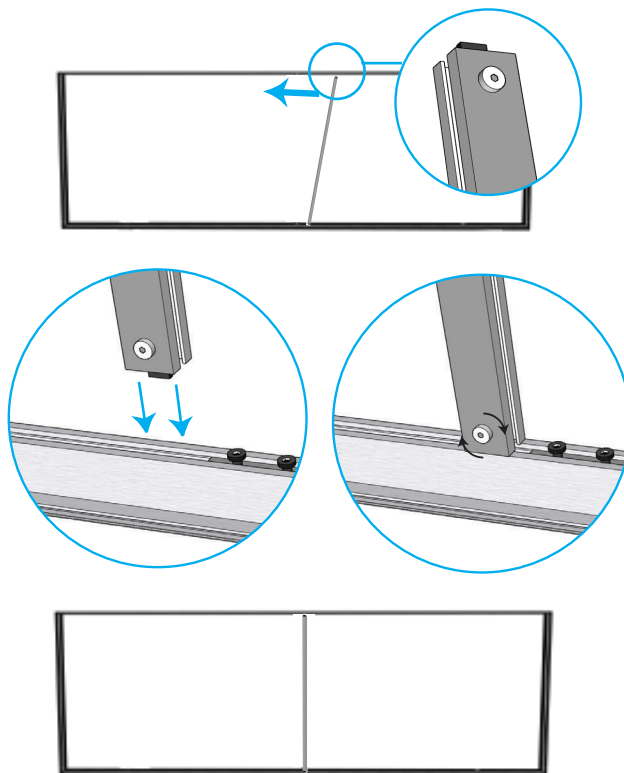
If your corners are not aligned, loosen screws, readjust 90° angle, and re-tighten to avoid sharp edges.



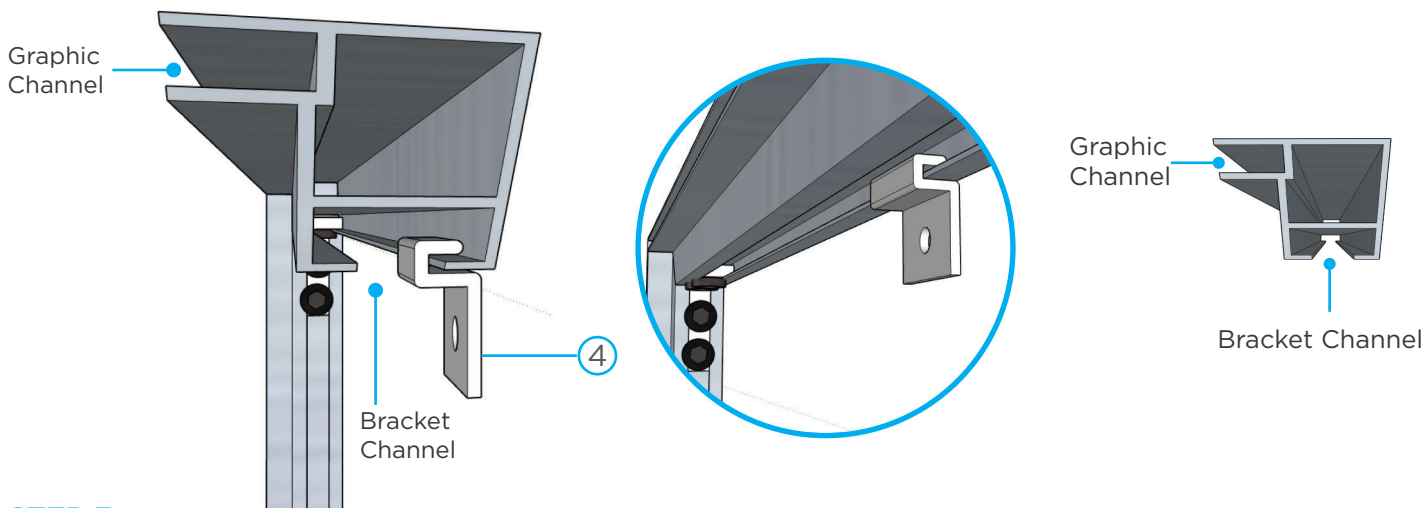
STEP 6

You will install 1 Middle Support Bar to keep the frame from sagging in the middle.

Insert the clamped ends into the bracket channel of the Extrusions. Once in place, tighten the screw clamp until it is fastened to the frame. Do this for both ends of the Middle Support Bar.



Installing Wall Mount Brackets

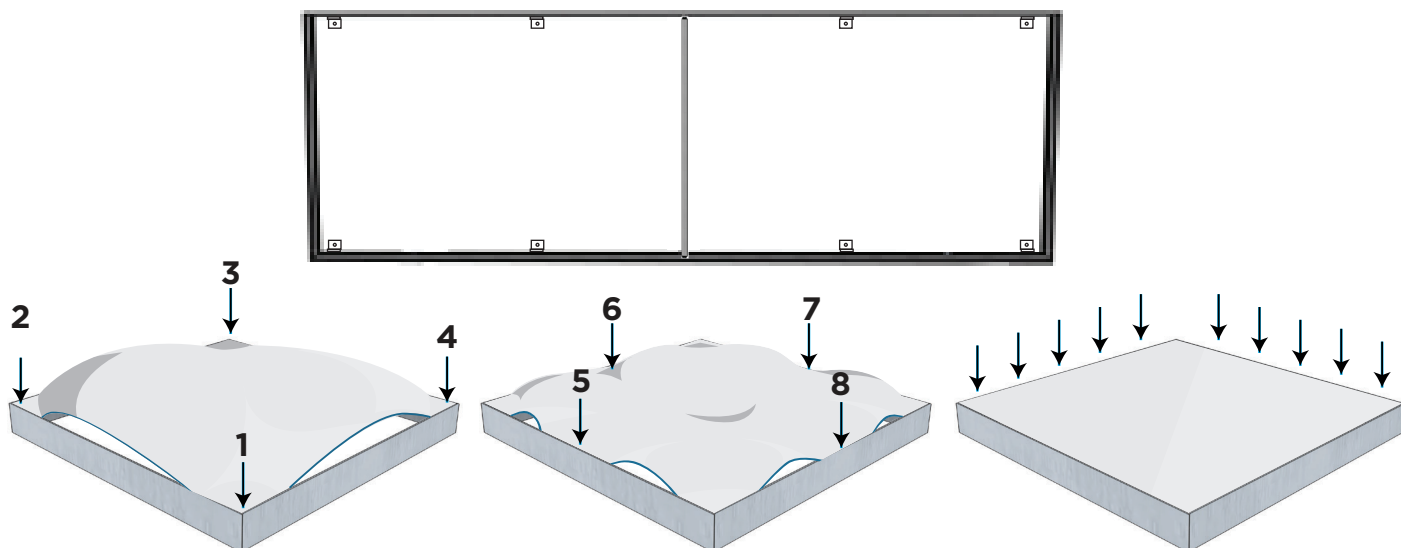


STEP 7

Now that your frame is assembled, you will mount it to the wall. Attach (x2) Wall Mount Brackets to the top of the frame by inserting them into the lip of the Bracket Channel. Make certain the Wall Mount Brackets are attached to the back of the frame. Mount the frame to your wall using the appropriate hardware (not provided). Slide the brackets as necessary to align with your vertical wooden wall strips. Use the remaining Wall Mount Brackets to secure the frame flush to the wall in the top and bottom bracket channels. Install directly into vertical wood wall strips.

STEP 8

Now that the frame is mounted to the wall, you will install the fabric graphic into the graphic channel.



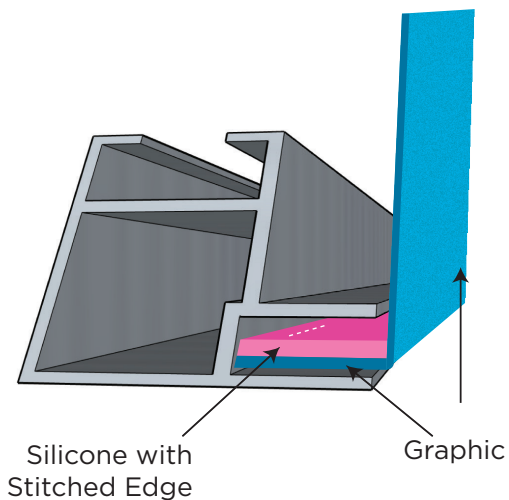
Push the silicone edge into each corner of the frame profile (1-4) with your thumb.

Push the silicone edge into the middle of each frame profile (5-8) and work your way around the perimeter of the frame until the silicone edge of the graphic is pushed in properly.

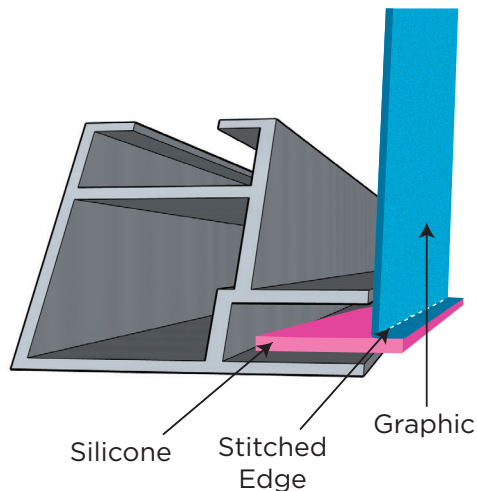
If necessary; Go around the perimeter again to ensure the silicone edge is secure and hidden in the frame profile. The graphic should be smooth and taut.

GRAPHIC INSTALLATION

CORRECT



INCORRECT



NOTE: Locate the silicone edge on the graphic which is sewn on the back perimeter. When installing the graphic be certain to insert the silicone edge correctly. The stitched edge on the silicone should be inserted first. If done correctly the silicone edge will completely fit in the graphic channel and no longer be visible once installation is complete.