







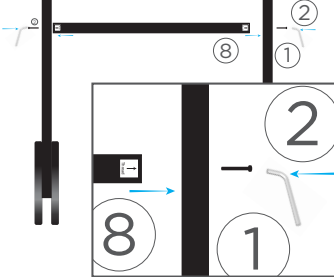


### KIOSK PARTS LIST

|  |  |   |  |  |
|--|--|---|--|--|
| ①<br><br><b>Allen Wrench</b> 1 pc        | ②<br><br><b>Bolts</b> 2 pcs | ⑤<br><br><b>Frame Top</b> 1 pc | ⑥<br><br><b>Short Bars with Feet</b> 2 pcs | ⑦<br><br><b>Short Bars</b> 2 pcs                  |
| ③<br><br><b>Threaded Connector</b> 2 pcs | ④<br><br><b>Clips</b> 4 pcs |   |  | ⑧<br><br><b>Short Bar threaded both ends</b> 1 pc |

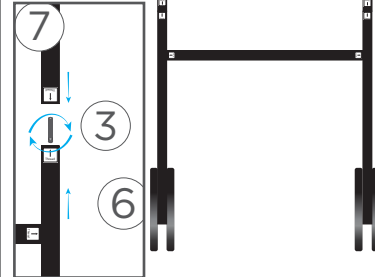
### FRAME ASSEMBLY INSTRUCTIONS

#### STEP 1



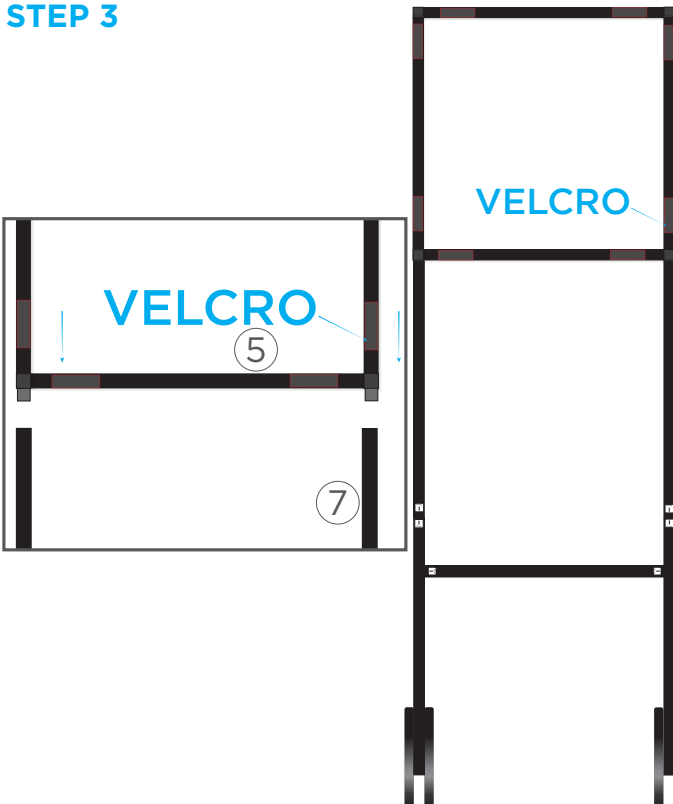
Using the Bolts and the Allen Wrench attach the Short Bar with threads to the Bars with Feet

#### STEP 2



Using the Threaded Connectors attach the Short Bars with Feet to the Short bars. Rotate the bars together until they are flush and straight.

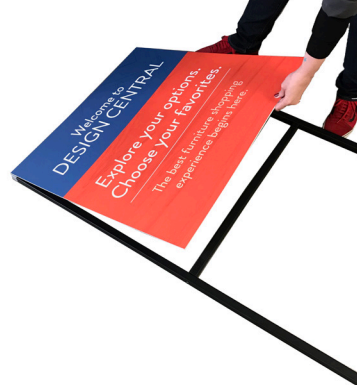
#### STEP 3



Now that the bottom of the frame is complete. Slide the Top Frame connectors into the Base Bars completing the frame for graphic installation.

### GRAPHIC INSTALLATION

#### STEP 4



Align the velcro on the back of the graphic to the velcro on the bars of the kiosk frame.

#### STEP 5



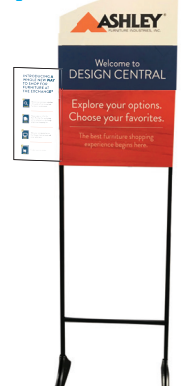
Attach plastic clips to the top and side graphics.

#### STEP 6



Remove the backing paper from the plastic clips, and attach the logo panel to the top of the frame.

#### STEP 7



When assembly is complete this is how your completed kiosk display will look.