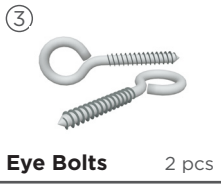


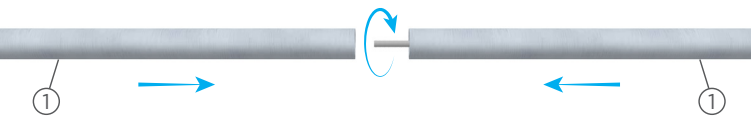
**PARTS LIST**



**ASSEMBLY INSTRUCTIONS**

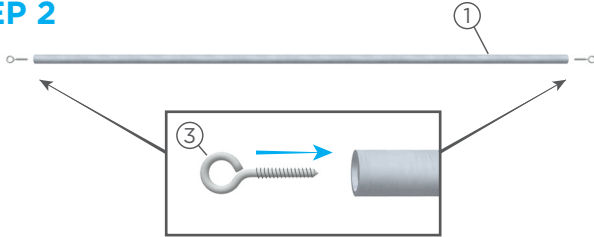
Some of these steps may have already been completed for you or may not apply depending on the size of your EZ Room Divider

**STEP 1**



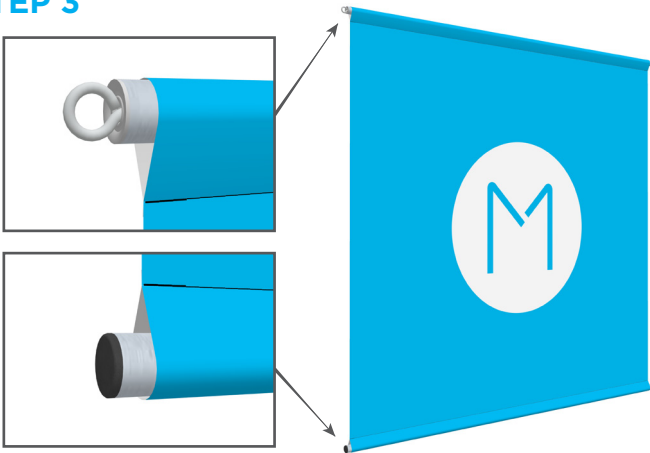
If your EZ Room Divider has a larger width, the two dowels may come in two halves. If this is the case, simply screw the two ends of each dowel together.

**STEP 2**



Screw an eye bolt into each end of the dowel with threaded endcap (If the EZ Room Divider is going to be displayed against a wall, see "AGAINST A WALL" to the right before proceeding to make installation easier)

**STEP 3**

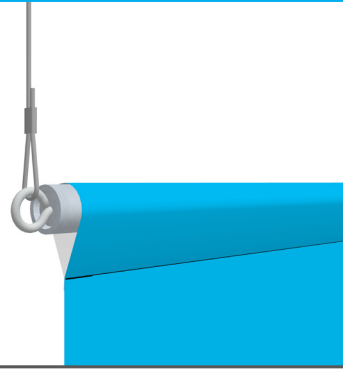


Insert the dowel with eye bolts into the top pocket of the graphic and insert the black-capped dowel into the bottom pocket of the graphic

**DISPLAY OPTIONS/INSTRUCTIONS**

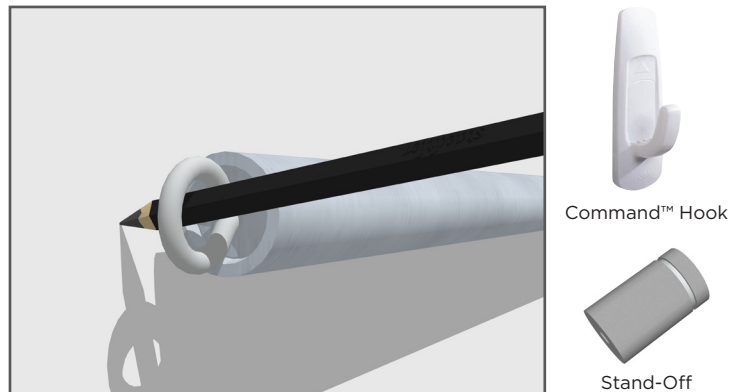
**HANG FROM CEILING**

Hang the assembled EZ Room Divider from the ceiling using cables (sold separately). Be sure to attach the top of your cables to a secure point and that they are oriented the way you want your sign to hang. You may need to make slight adjustments to the length of your cable to assure your graphic hangs level.



**AGAINST A WALL  
STAND-OFFS OR COMMAND HOOKS**

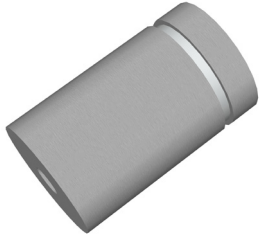
When using either stand-offs (sold separately) or Command™ Hooks (not sold through Moso), hold up the dowel with eye bolts against the wall, making sure it is level and in the precise place you want it to be displayed. Make a small mark inside each eye bolt with a pencil. You can then affix your chosen attachment hardware centered on these marks.



**COMMAND™ HOOKS:** Different Command™ Hooks are designed to handle different amounts of weight. If you choose to mount your EZ Room Divider using Command™ Hooks, make sure the ones you purchase are rated to handle the weight of your EZ Room Divider. See Command™ Hook package for installation instructions.

**STAND-OFFS:** For steps on how to install stand-offs, see the instruction sheet "STAND-OFF INSTALLATION." (pg. 02)

## PARTS LIST



Stand-Off  
Quantity depends on application

## YOU MAY NEED



Hammer



Pencil



Drill



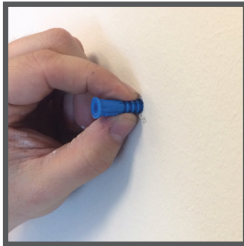
Level

## INSTALLATION INSTRUCTIONS

### STEP 1



### STEP 2



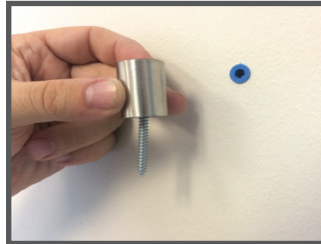
### STEP 3



**(Step 1)** After you have marked on the wall where to install the stand offs. Use a drill with an appropriately sized drill bit for your drywall anchor. Drill a hole in the center of each mark. **(Step 2)** Insert your drywall anchors into each hole you have drilled. **(Step 3)** You may need to tap them in with a hammer.

### STEP 4

**(Step 4)** Using the provided screws, affix your stand off base into your drywall anchor until it is tight and flush with the wall. Repeat this step for all stand offs.



### STEP 5



### STEP 6



### STEP 7a



### STEP 7b



**(Step 5)** Find your top dowel, and put the washer and top of the stand off in the right eye-bolt. **(Step 6)** Insert stand off screw into the base part now attached to the wall. Do not tighten all the way. **(Step 7a)** Once the right side of the dowel is attached to the wall, raise it up so it is level. **(Step 7b)** Your left eye-bolt should be positioned over the 2nd stand off base.

### STEP 8

**(Step 8)** Once you have your standoffs positioned, remove the dowel from the wall. Insert pole through the top pole pocket of your graphic. Raise the pole to its intended location, and screw the top stand offs and washers into the parts attached to the wall.

