






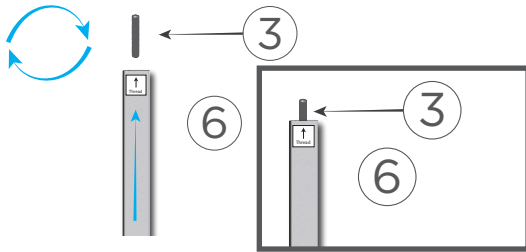


FRAME PARTS LIST

①  Allen Wrench 1 pc	②  Bolt A 2 pcs	③  Bolt B 2 pcs	④  Base 1 pc
⑤  Top Bars (with connectors) 1 pc	⑥  Bar Threaded Top & Bottom 2 pcs	⑦  Bar Threaded Bottom 2 pcs	

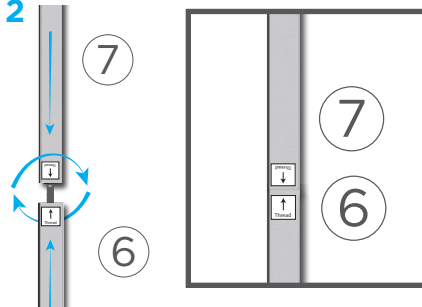
FRAME ASSEMBLY INSTRUCTIONS

STEP 1



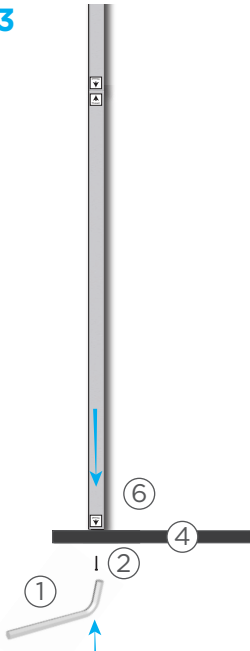
Thread Bolt B into the Bar with threads on both ends until it's about half way Repeat this for the process with second Bolt and Bar.

STEP 2



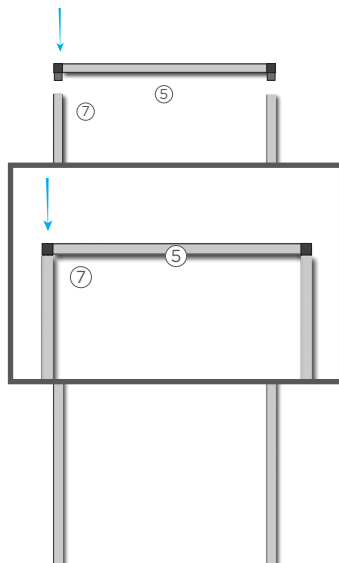
Thread the Bars with thread on the Bottom to the Bars with the Bolt B. Make sure that the two now long bars are straight and flush together.

STEP 3



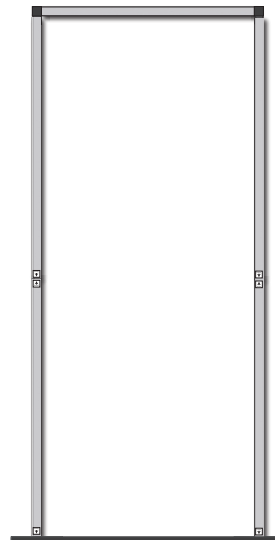
Using the Allen Wrench and Bolt A attach your poles to your Base.

STEP 4



Insert the Top Bar with the connectors into the long bars attached to the Base.

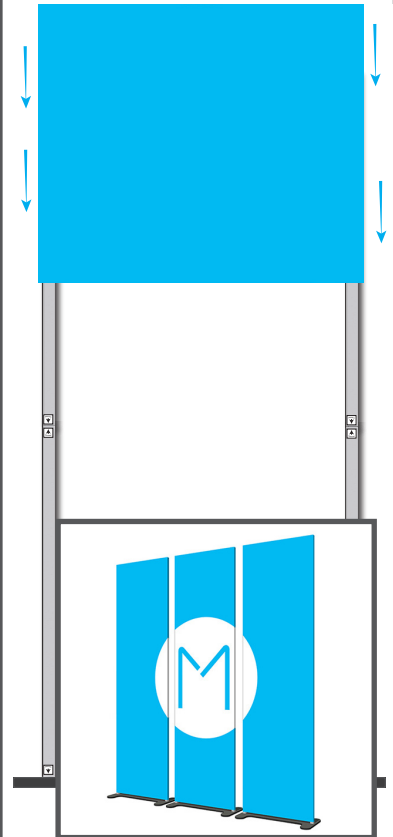
STEP 5



This is how your completed frame should look.

GRAPHIC INSTALLATION

STEP 6



Take your fabric graphic and find the bottom opening. Stitched edge(s) will line up to the narrow edge of the frame.

Carefully pull the graphic over the entire structure like pulling on a sock or pillowcase. When the graphic is all the way on, smooth out wrinkles with your fingers and align seams to edges of the frame

On tall frames, a helper to hold the fabric for you is **highly recommended**.

You may also need a step stool or step ladder to get the fabric started over the top of the frame.